



Replacing 1986-1993 Volvo 240 Distributor Rotor

Written By: David Hodson

INTRODUCTION

The distributor rotor delivers voltage from the ignition coil to each spark plug wire inside the distributor. Many ignition issues can be traced back to the distributor rotor and/or cap.

Because of this, it's a good idea to replace the distributor cap whenever you replace the rotor.

TOOLS:

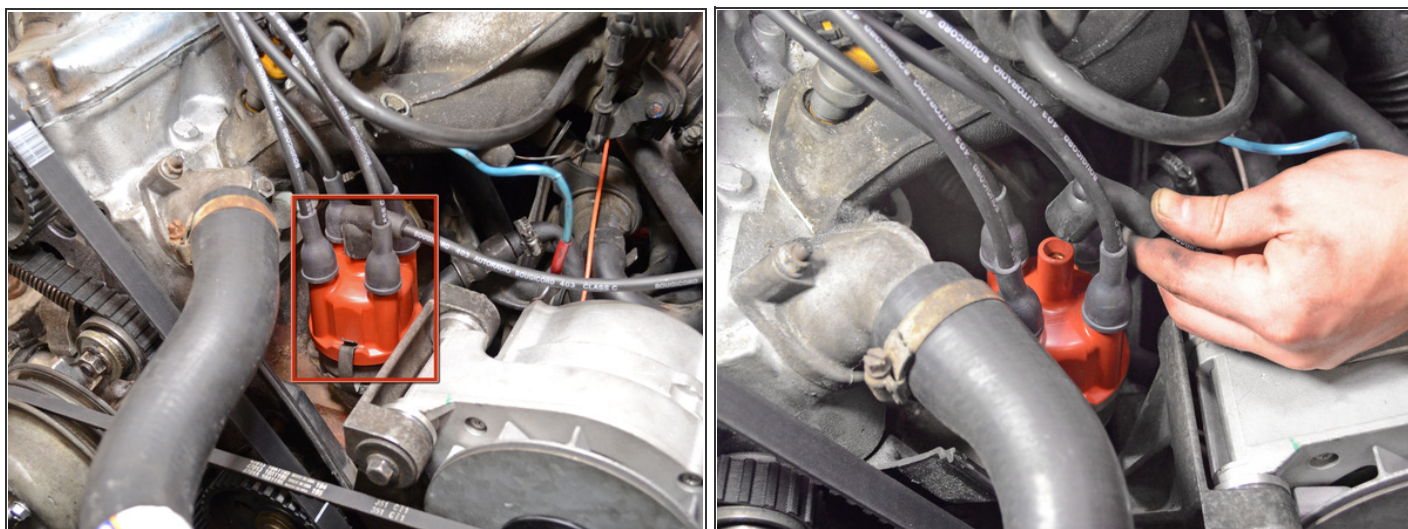
- [Flathead Screwdriver](#) (1)


PARTS:

- [Distributor Rotor](#) (1)

Check an online database or the parts counter at your local auto parts store for the correct part number.



Step 1 — Distributor Cap



- The distributor cap is located next to the engine and has all of the spark plug wires connecting to it. 
- Pull straight up on the ignition coil wire in the center of the distributor cap to disconnect it.

Step 2



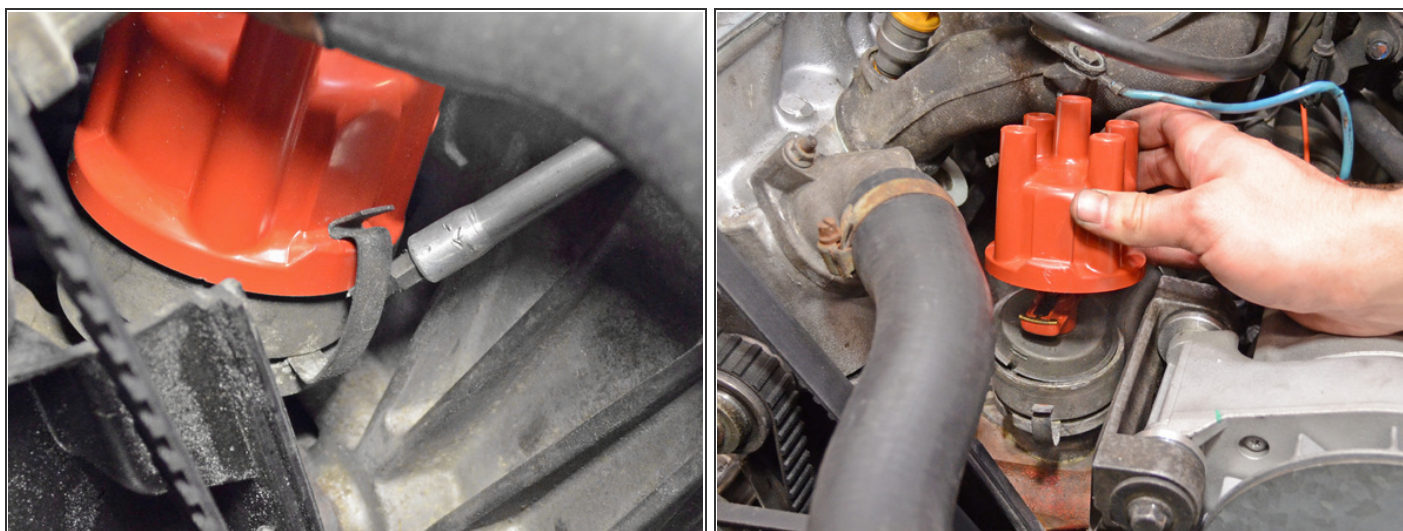
- Connect the spark plug wires to the new distributor cap one at a time. Mixing up the order will result in the engine not firing properly or at all. 
- Pull straight up on the boot of the first spark plug wire to disconnect it from the distributor cap.
- Be sure to pull on the boot and not the wire itself. Spark plug wires are quite fragile and may break easily. 

Step 3



- Install the spark plug wire onto the new distributor cap and make sure it is seated properly.
- Continue to transfer each spark plug wire to the new distributor cap, maintaining the same arrangement of wires on the cap.
- Once all of the spark plug wires have been installed on the new distributor cap, set the cap aside.

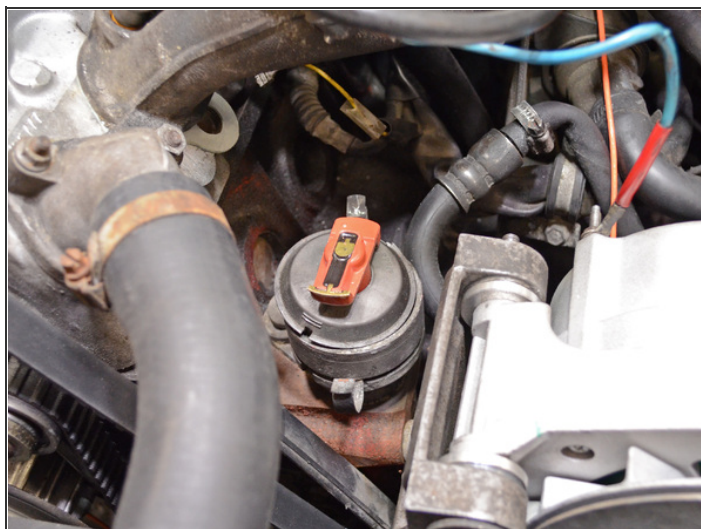
Step 4



- Use a flathead screwdriver to release the clip securing the distributor cap.
 - Only one side of the distributor cap has a spot for the clip to rest. The new cap must be installed in the same orientation.
- Remove the old distributor cap.
- When installing the new distributor cap, don't forget to reconnect the center ignition coil wire.



Step 5 — Distributor Rotor



- The distributor rotor sits directly underneath the distributor cap and is not held in place by any screws or fasteners.
- Lift the distributor rotor straight up and out of the distributor to remove it.



Step 6



- The distributor rotor is keyed, which means that the new rotor will only go on in one orientation.



Place the new distributor rotor and cap back in the same orientation that the old ones were removed.

